

DRY BATTERY

DRY | CONVENTIONAL

REF

12N12A-4A-1



12V

VOLTAGE - V

120A

CCA - A

12.6Ah

CAPACITY - Ah (20Hr)

12Ah

CAPACITY - Ah (10Hr)

TECHNOLOGY

- Lead acid dry charged construction (absorbed acid)
- No acid in cells, must be filled with acid before use
- 6 & 12V batteries

FEATURES

- Upright installation only
- Has to be checked periodically and refilled with water if necessary
- Internal gas emission through venting hole
- Handle with care to prevent acid spillage
- Regular life duration
- Does not need to be recharged while stocked

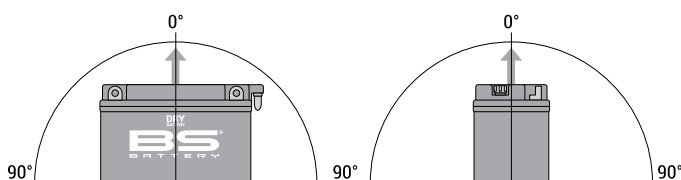
UPGRADE FOR

WEIGHT

Battery (with acid) :

Approx 4.06kg

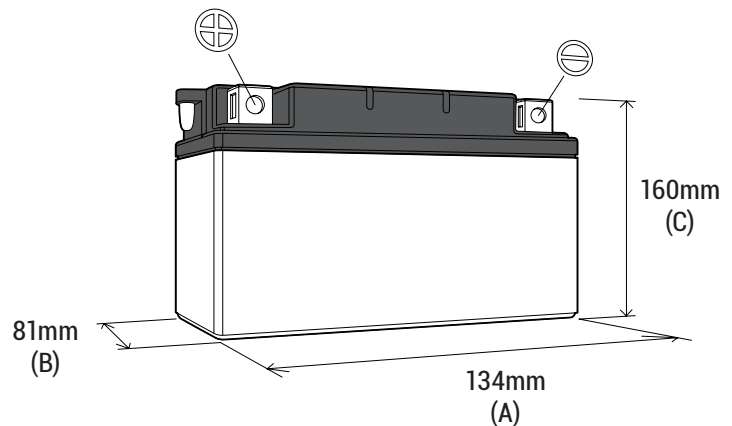
MOUNTING ANGLE



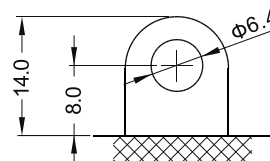
Upright installation only

DIMENSIONS

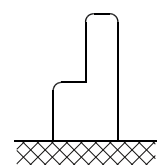
Length (A) :	134±2mm
Width (B) :	81±2mm
Container height :	160±2mm
Total height (C) :	160±2mm



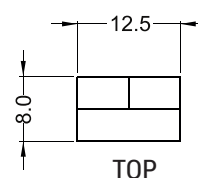
TERMINALS



FRONT



SIDE



TOP

mm