

DRY
BATTERY

DRY | CONVENTIONAL

REF

12N5.5-4B


12V

VOLTAGE - V

55A

CCA - A

5.8Ah

CAPACITY - Ah (20Hr)

5.5Ah

CAPACITY - Ah (10Hr)

TECHNOLOGY

- Lead acid dry charged construction (absorbed acid)
- No acid in cells, must be filled with acid before use
- 6 & 12V batteries

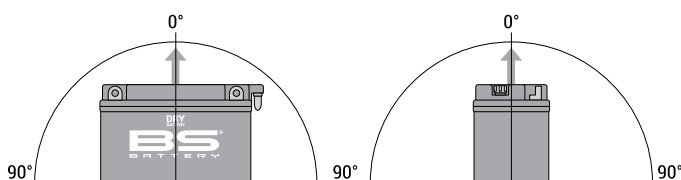
FEATURES

- Upright installation only
- Has to be checked periodically and refilled with water if necessary
- Internal gas emission through venting hole
- Handle with care to prevent acid spillage
- Regular life duration
- Does not need to be recharged while stocked

UPGRADE FOR
WEIGHT

Battery (with acid) :

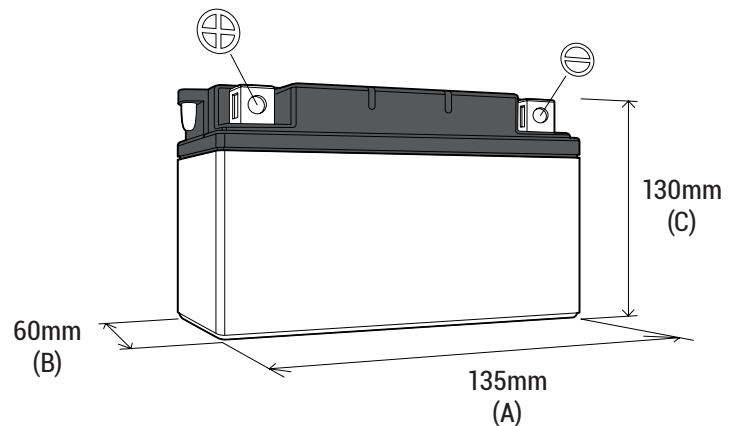
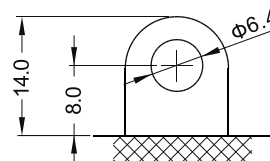
Approx 2.15kg

MOUNTING ANGLE


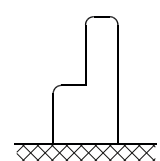
Upright installation only

DIMENSIONS

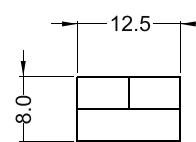
Length (A) :	135±2mm
Width (B) :	60±2mm
Container height :	130±2mm
Total height (C) :	130±2mm


TERMINALS


FRONT



SIDE



TOP