

DRY BATTERY

DRY | CONVENTIONAL
REF B49-6

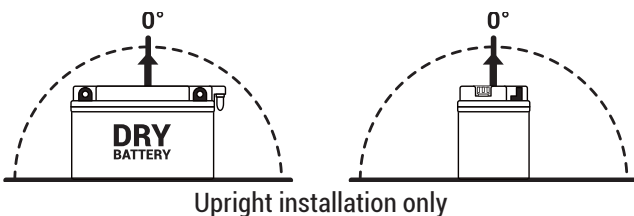
6v
VOLTAGE - V
10.5Ah
CAPACITY - Ah (20Hr)
10Ah
CAPACITY - Ah (10Hr)
TECHNOLOGY

- Lead acid dry charged construction (absorbed acid)
- No acid in cells, must be filled with acid before use
- 6 & 12V batteries

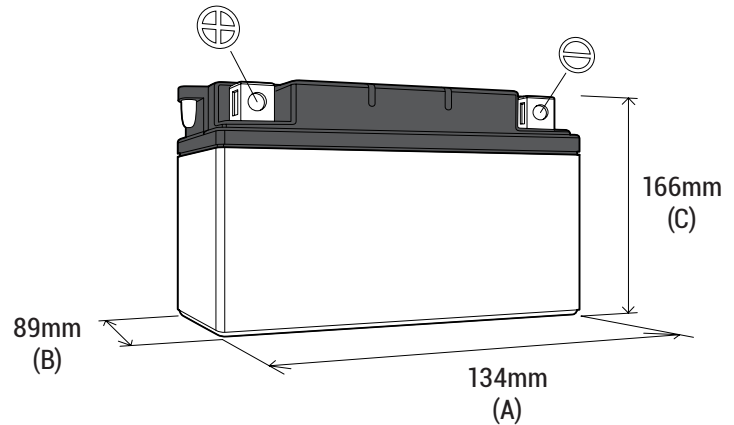
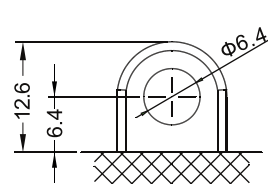
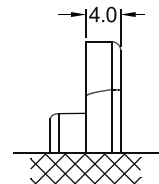
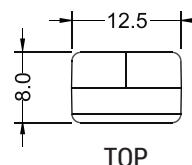
FEATURES

- Upright installation only
- Has to be checked periodically and refilled with water if necessary
- Internal gas emission through venting hole
- Handle with care to prevent acid spillage
- Regular life duration
- Does not need to be recharged while stocked

UPGRADE FOR
WEIGHT

 Battery (with acid): Approx 2.17kg
MOUNTING ANGLE

DIMENSIONS

Length (A):	91mm ±2mm
Width (B):	83mm ±2mm
Container height:	160mm ±2mm
Total height (C):	160mm ±2mm


TERMINALS (mm)

FRONT

SIDE

TOP