

MF
BATTERY

MF | MAINTENANCE FREE

REF **BTX16-BS-1**

12v VOLTAGE - V

230A CCA - A

14.7Ah CAPACITY - Ah (20Hr)

14Ah CAPACITY - Ah (10Hr)

TECHNOLOGY

- AGM construction (absorbed acid)
- VRLA battery (Valve Regulated Lead Acid)
- Supplied with a separate acid pack
- Homologated by OEM

FEATURES

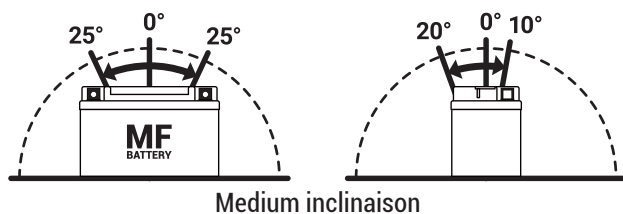
- Upright installation only
- Maintenance free (no water refilling)
- Sealed after filling, no gas emission through venting hole (under normal operation)
- High power
- Does not need to be recharged while stocked
- Suitable for cold weather
- Reduction of plate sulfation
- Higher life cycle (up to three times longer than conventional batteries)
- Longer voltage hold

UPGRADE FOR

WEIGHT

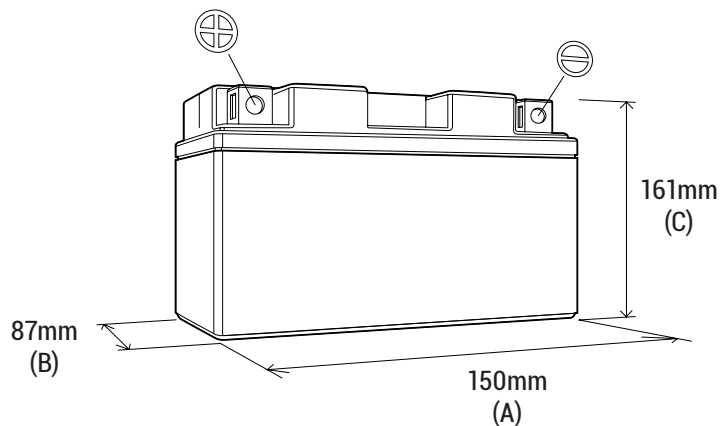
Battery (with acid): Approx 4.96kg

MOUNTING ANGLE

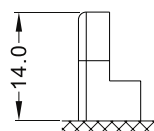


DIMENSIONS

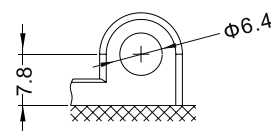
Length (A): 150mm ±2mm
 Width (B): 87mm ±2mm
 Container height: 161mm ±2mm
 Total height (C): 161mm ±2mm



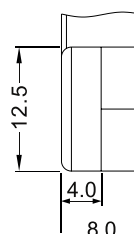
TERMINALS (mm)



FRONT



SIDE



TOP