

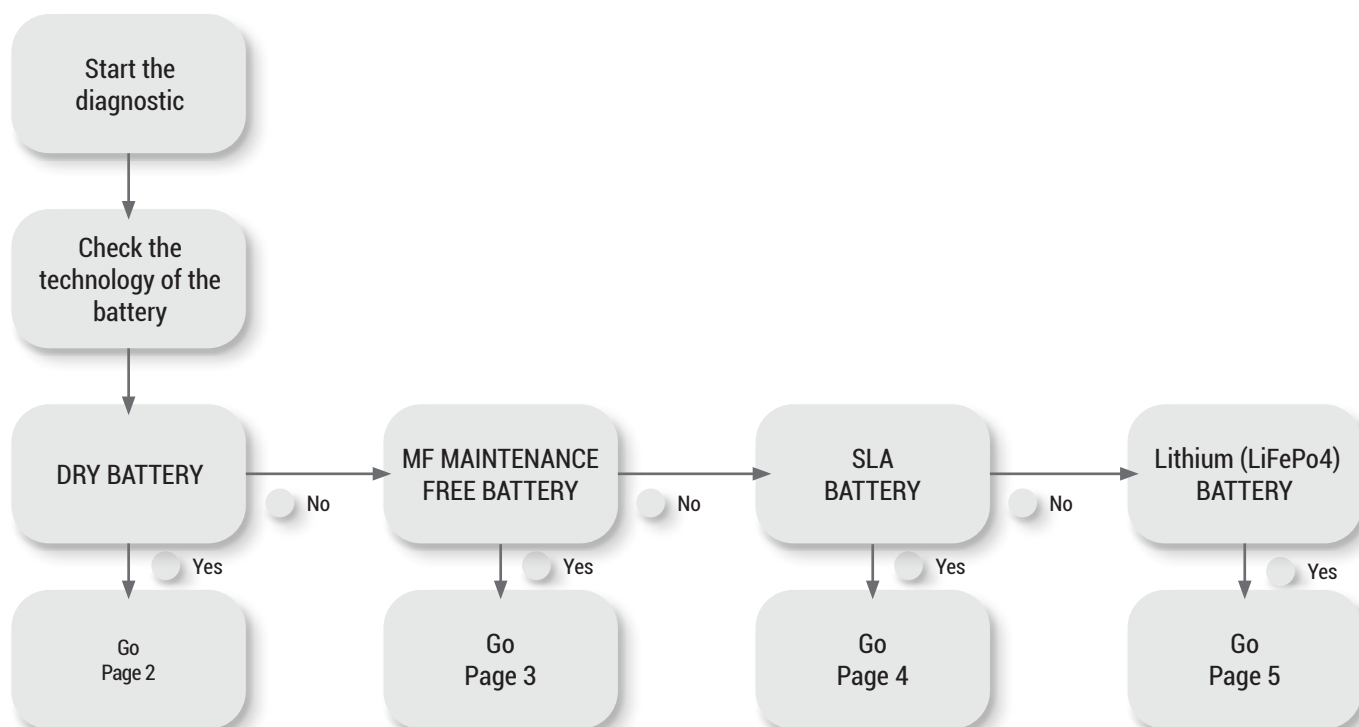
BATTERY TYPE		CUSTOMER NAME	
DATE		SERIAL NUMBER	
RESELLER		INSTALLATION DATE	

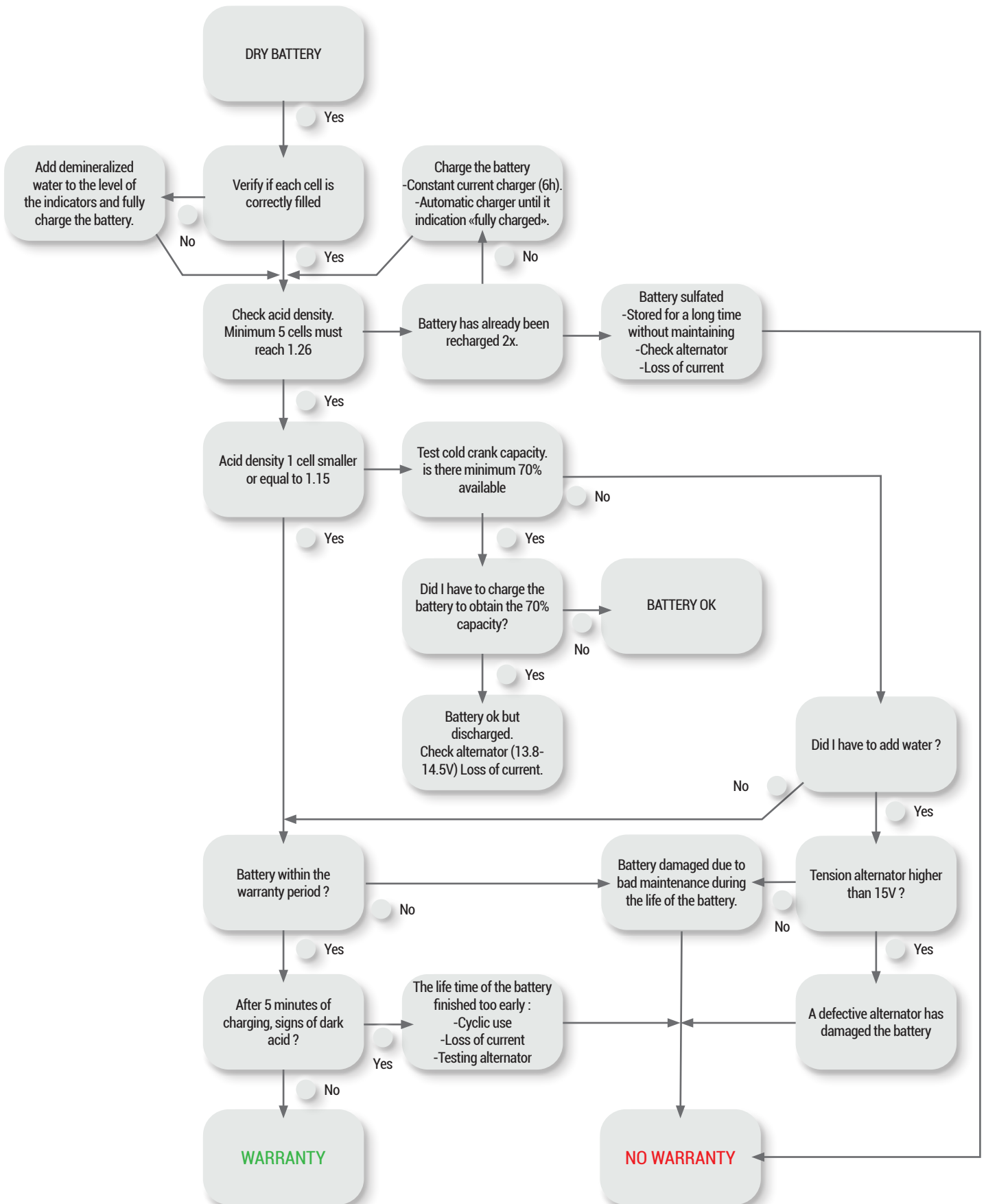
When can we speak of warranty?

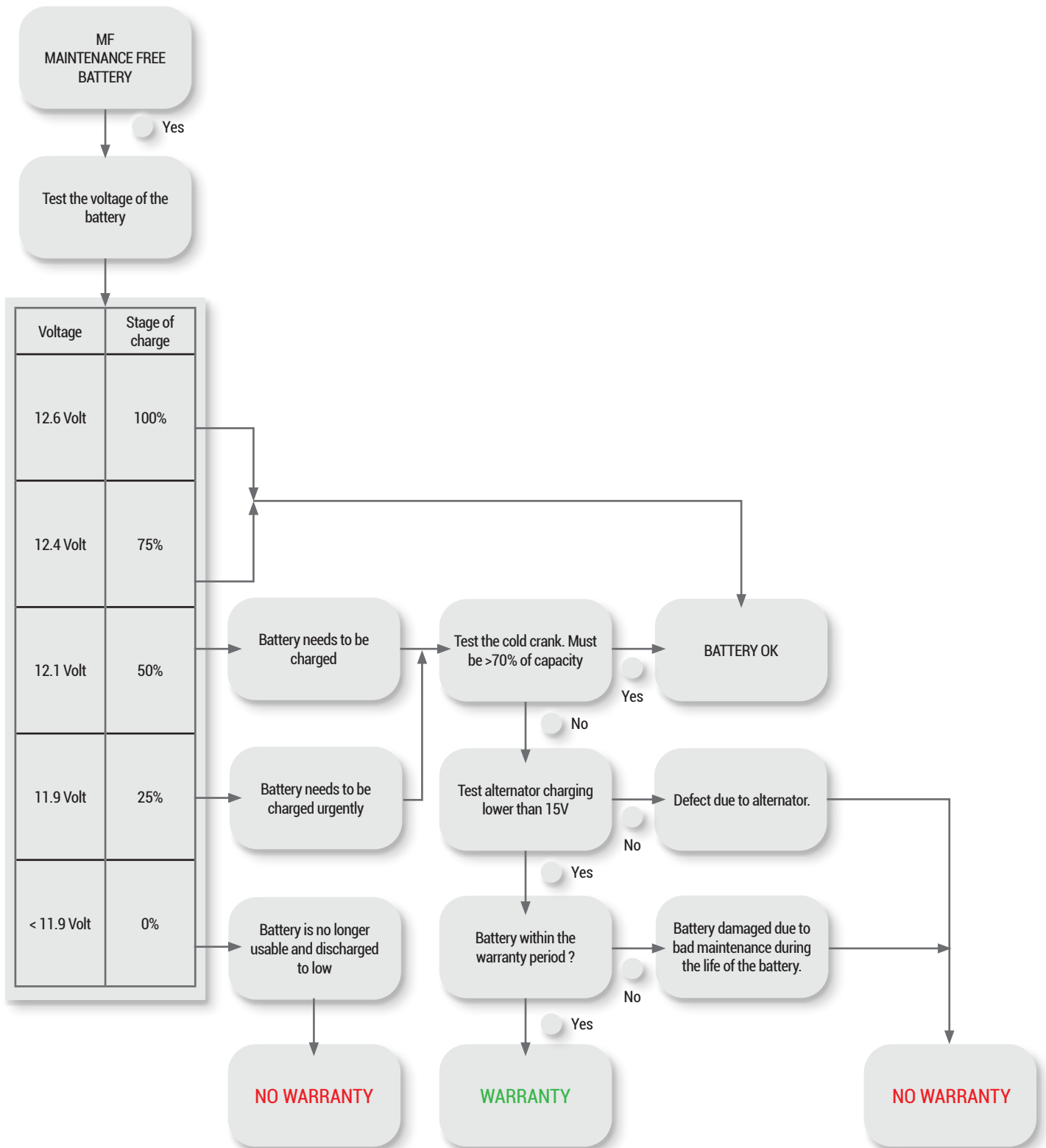
1. When the battery is returned to the sales point within the proposed warranty period.
2. Short circuit in one or more elements if the battery is brand new.
3. Internal interruption or bad terminal connection.
4. Inversed polarity of a new battery.

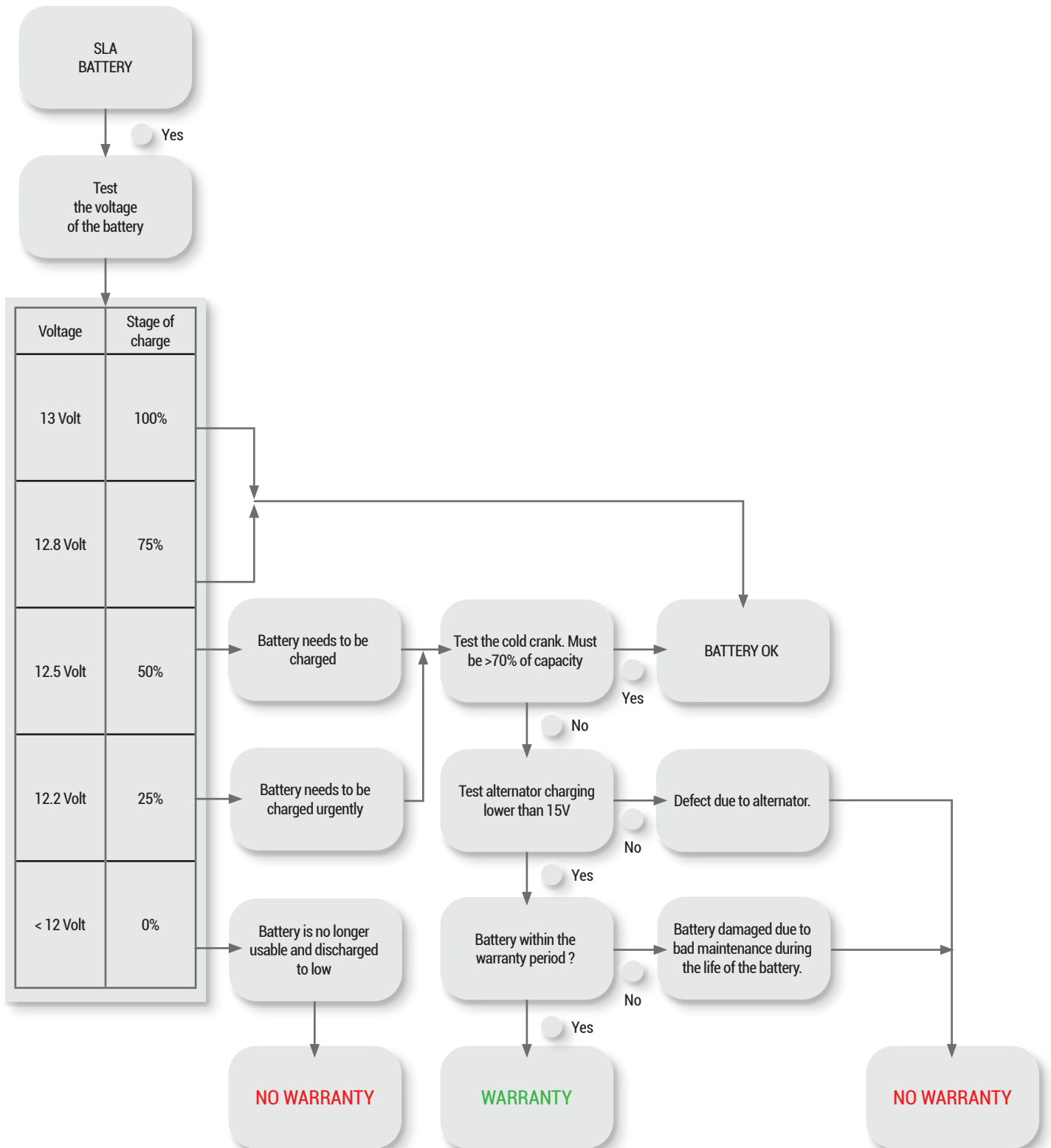
When is the warranty claim rejected?

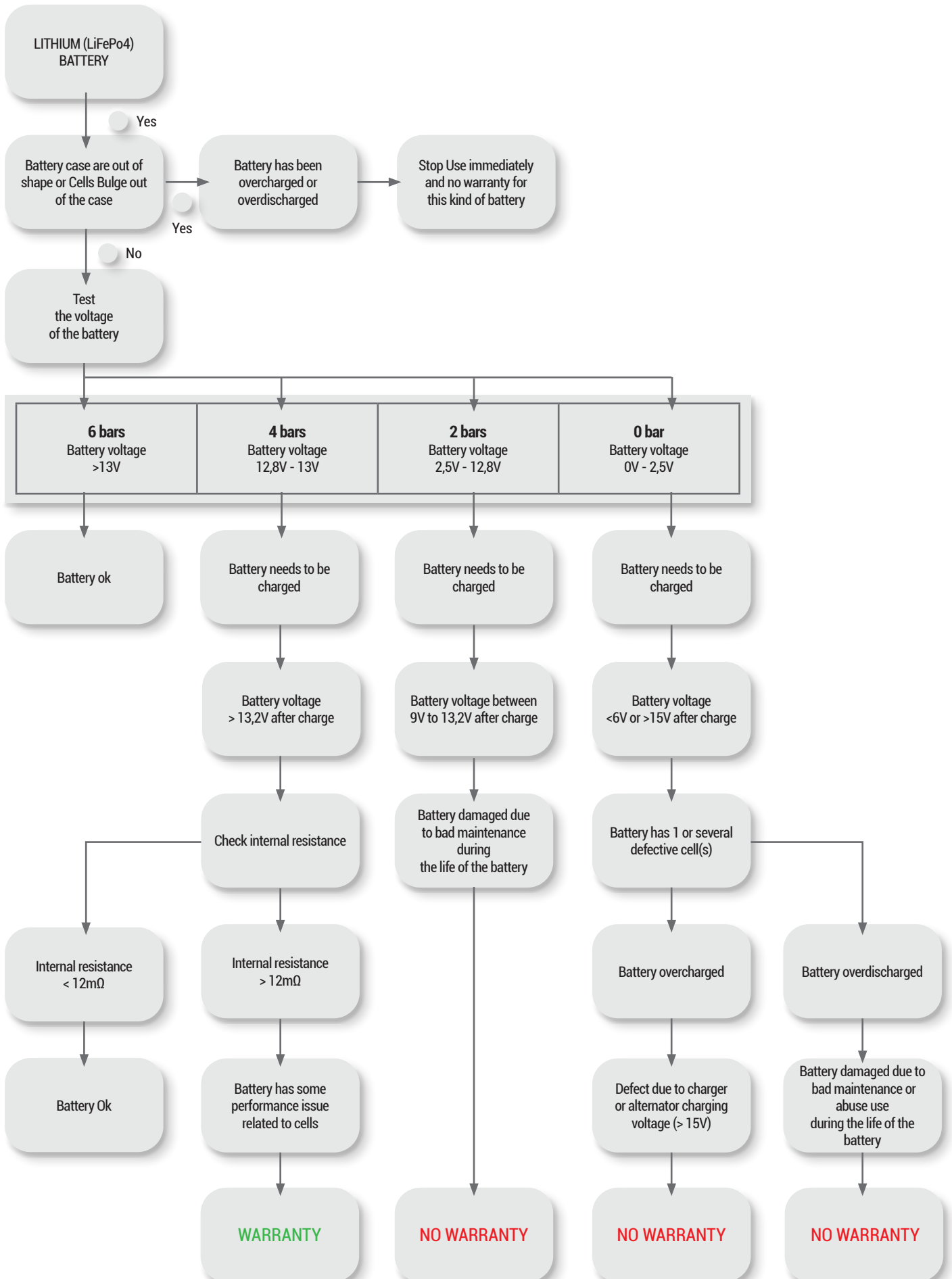
1. Excessive runout.
2. Consequences of negligence or improper handling.
3. Case or lid damage.
4. Damaged terminals.
5. Frozen batteries.
6. Use of the battery in the wrong application/vehicle.
7. Use of additives other than recommended.











MANUFACTURING DATE

LEAD ACID BATTERIES - DRY, MF, SLA



1214-BS-CD-C11

- 2 first digits correspond to the year of production
12 = 2021
- 2 second digits correspond to the week of production
14 = 14th week of the year

LITHIUM (LiFePo4) BATTERIES



1222BSLIC144200

- 2 first digits correspond to the year of production
12 = 2021
- 2 second digits correspond to the week of production
22 = 22th week of the year