

# SLA MAX

READY TO START  
MAXIMUM POWER

Ready to use, SLA MAX batteries (AGM technology) are **Factory Activated, completely spill-proof, and require no maintenance.** Specially developed to meet the superior needs of big-engine bikes offering **maximum performance, maximum reliability and extended life.**

ORIGINAL EQUIPMENT  
**OEM**  
MANUFACTURER

**plug  
and  
play**



## FACTORY ACTIVATED

AGM (Absorbent Glass Mat) technology.



## READY TO USE

Just plug & play.



## NO MAINTENANCE

VRLA (Valve Regulated Lead Acid) design.



## SPILL-PROOF DESIGN

Factory sealed & electrolyte held in a glass fiber mat.



## NO ACID HANDLING

Very safe.



## EXTREME VIBRATION RESISTANCE

Reinforced battery case.



## MAXIMUM STARTING POWER & EXTENDED CYCLE LIFE

20% higher than SLA CCA.

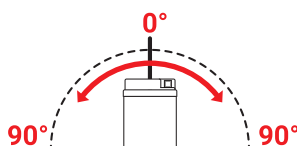


## SUPERIOR CAPACITY

20% higher than SLA capacity.

### MOUNTING ANGLES

**HIGH INCLINATION  
NON-SPILLABLE**



### COMPATIBLE CHARGERS

**BS 10** Battery size up to 20Ah  
**BS 30 MAX** Battery size up to 60Ah

**BS 30** Battery size up to 60Ah  
**BK 20** Battery size up to 40Ah

**BS 60**  
Battery size up to 120Ah

### DID YOU KNOW?

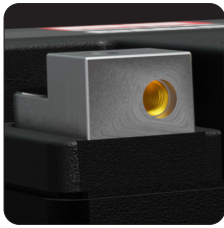
SLA MAX range is a perfect solution for ATV, UTV, SSV, watercraft & snowmobile too!

SLA MAX batteries are non-spillable, so they're safe to ship and e-commerce ready!

**FOR HARLEY DAVIDSON - BGZ SERIES**

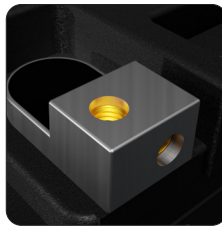
Developed to fit Harley Davidson bikes, the SLA MAX BGZ series thus offer maximum performance to big-engine vehicles with demanding requirements and extensive electronic equipment.

BS BATTERY TYPE	BS CODE	CAPACITY Ah (10Hr)	CAPACITY Ah (20Hr)	CCA A (-18°C)	DIMENSIONS (IN)			ASSEMBLY LAYOUT	TERMINAL	REPLACEMENT - MOST POPULAR MODELS	
					L	W	H			SLA / SLA MAX	MF / DRY
BGZ16H	300931	16	16.8	240	5,91	3,48	5,71			BTX14H BTX14	BTX14-BS
BGZ16HL	300932	16	16.8	240	5,91	3,48	5,71			BTX14HL BTX14L	BTX14L-BS
BGZ20H	300938	20	21.1	360	6,96	3,5	6,06			BTX20H	BTX20-BS
BGZ20HL	300939	20	21.1	360	6,96	3,5	6,06			BTX20HL	BTX20L-BS BTX20HL-BS BB18L-A
BGZ32HL	300935	32	33.7	500	6,69	5,2	6,89			BIX30HL BIX30L	BIX30L-BS BB30L-B



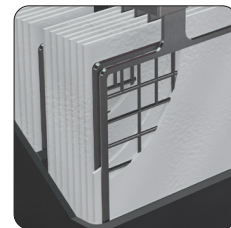
**BUILT-IN COPPER NUTS**

Enhanced conductivity (up to 50% more than standard terminal) & improved max torque strength (up to 13N.m).



**FRONT & TOP CONNECTIONS**

Designed to facilitate the mounting on Heavy Duty motorcycles.



**TALLER PLATES**

For enhanced CCA & Capacity.