

# 12N5-3B

BS CODE: **310533**

VOLTAGE **12V**

CCA **65A**

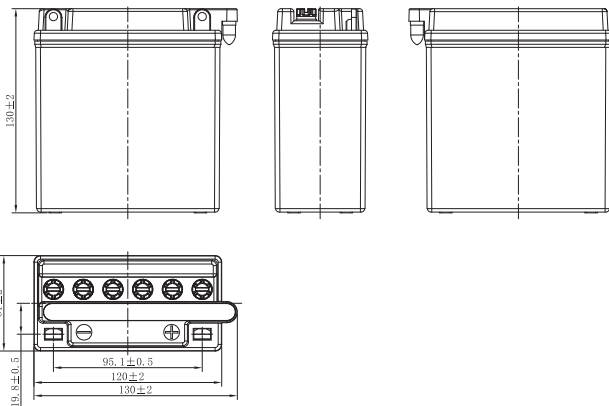
CAPACITY 20HR **5.3Ah**

CAPACITY 10HR **5.0Ah**



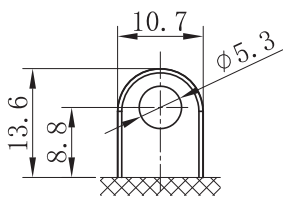
## DIMENSIONS

<b>LENGTH</b>	120 ±2mm	4.72 ±0.08inch
<b>WIDTH</b>	61 ±2mm	2.4 ±0.08inch
<b>TOTAL HEIGHT</b>	130 ±2mm	5.12 ±0.08inch
<b>WEIGHT</b>	1.42 kg ±5%	3.13 lbs ±5%

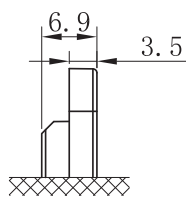


## TERMINAL (mm)

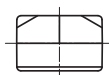
**POLARITY**



FRONT



SIDE



TOP

## DRY FEATURES



### TO BE ACTIVATED

DRY-charged technology.



### ACID PACK INCLUDED

For initial filling.



### PERIODIC MAINTENANCE

Refilled with water if necessary.



### HANDLE WITH CARE TO PREVENT ACID SPILLAGE



### LONG SHELF LIFE

No need to be recharged while stocked (if not activated).

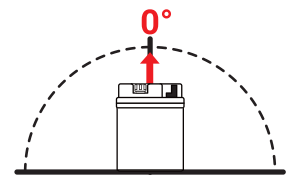
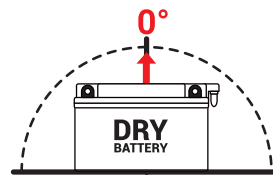


### INTERNAL GAS EMISSION THROUGH VENTING HOLE



### WIDE VARIETY OF 6V & 12V MODELS

## MOUNTING ANGLE



## UPGRADE FOR

SLA MAX	SLA	MF	DRY
-	-	-	-