

BB7C-A

BS CODE: **310593**

VOLTAGE **12V**

CCA **85A**

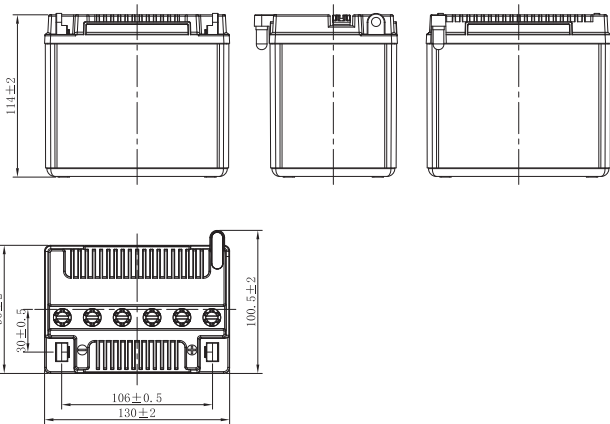
CAPACITY 20HR **8.4Ah**

CAPACITY 10HR **8.0Ah**



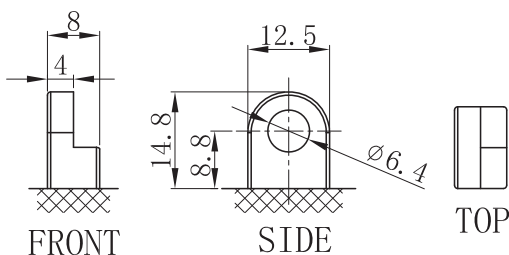
DIMENSIONS

LENGTH	130 ±2mm	5.12 ±0.08inch
WIDTH	90 ±2mm	3.54 ±0.08inch
TOTAL HEIGHT	114 ±2mm	4.49 ±0.08inch
WEIGHT	2.07 kg ±5%	4.56 lbs ±5%

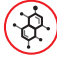





TERMINAL (mm)

POLARITY



DRY FEATURES

-  **TO BE ACTIVATED**
DRY-charged technology.
-  **ACID PACK INCLUDED**
For initial filling.
-  **PERIODIC MAINTENANCE**
Refilled with water if necessary.
-  **HANDLE WITH CARE TO PREVENT ACID SPILLAGE**
-  **LONG SHELF LIFE**
No need to be recharged while stocked (if not activated).
-  **INTERNAL GAS EMISSION THROUGH VENTING HOLE**
-  **WIDE VARIETY OF 6V & 12V MODELS**

MOUNTING ANGLE



UPGRADE FOR

SLA MAX	SLA	MF	DRY
-	-	-	-