

BHD-12

BS CODE: **310601**

VOLTAGE **12V**

CCA **280A**

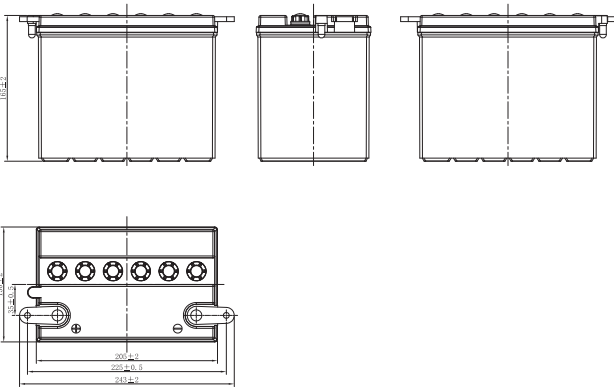
CAPACITY 20HR **29.5Ah**

CAPACITY 10HR **29.0Ah**

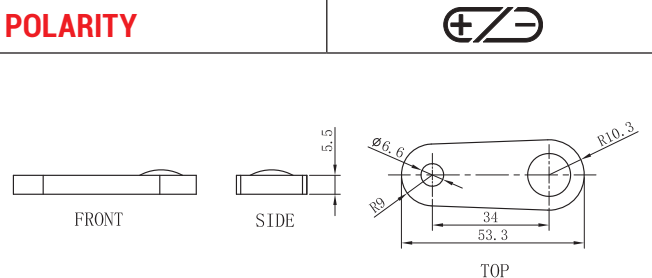


DIMENSIONS

LENGTH	205 ±2mm	8.07 ±0.08inch
WIDTH	130 ±2mm	5.12 ±0.08inch
TOTAL HEIGHT	165 ±2mm	6.5 ±0.08inch
WEIGHT	5.7 kg ±5%	12.57 lbs ±5%



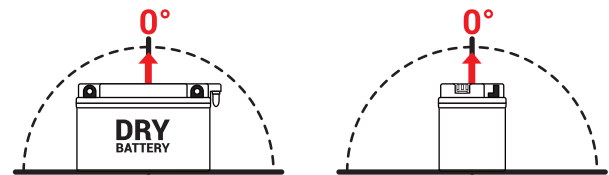
TERMINAL (mm)



DRY FEATURES

- TO BE ACTIVATED**
DRY-charged technology.
- ACID PACK INCLUDED**
For initial filling.
- PERIODIC MAINTENANCE**
Refilled with water if necessary.
- HANDLE WITH CARE TO PREVENT ACID SPILLAGE**
- LONG SHELF LIFE**
No need to be recharged while stocked (if not activated).
- INTERNAL GAS EMISSION THROUGH VENTING HOLE**
- WIDE VARIETY OF 6V & 12V MODELS**

MOUNTING ANGLE



UPGRADE FOR

SLA MAX	SLA	MF	DRY
-	-	-	-