

## U1-12

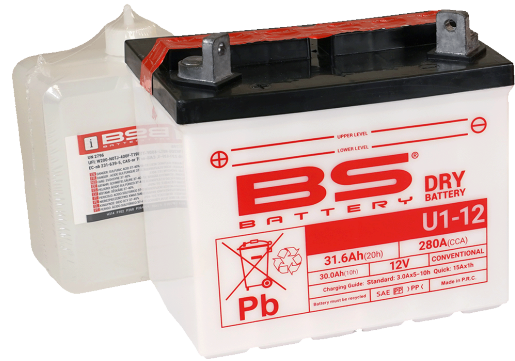
BS CODE: **310744**

VOLTAGE **12V**

CCA **280A**

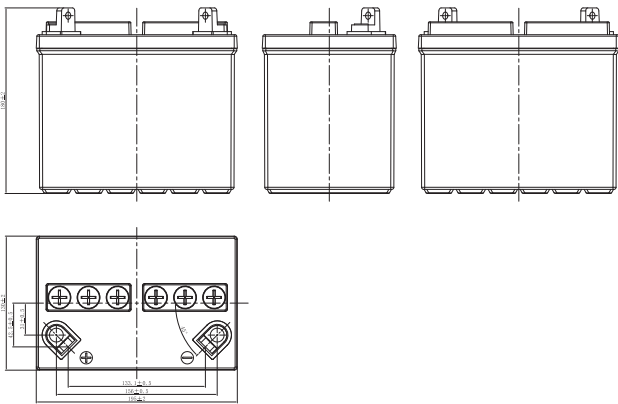
CAPACITY 20HR **31.6Ah**

CAPACITY 10HR **30.0Ah**



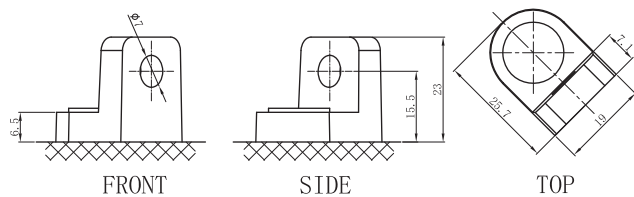
### DIMENSIONS

<b>LENGTH</b>	195 ±2mm	7.68 ±0.08inch
<b>WIDTH</b>	130 ±2mm	5.12 ±0.08inch
<b>TOTAL HEIGHT</b>	180 ±2mm	7.09 ±0.08inch
<b>WEIGHT</b>	5.56 kg ±5%	12.26 lbs ±5%



### TERMINAL (mm)

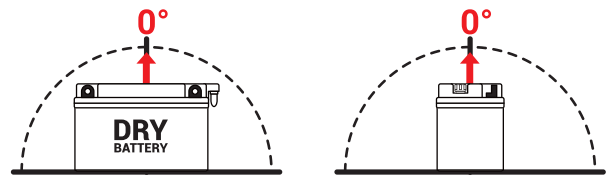
**POLARITY**



### DRY FEATURES

- TO BE ACTIVATED**  
DRY-charged technology.
- ACID PACK INCLUDED**  
For initial filling.
- PERIODIC MAINTENANCE**  
Refilled with water if necessary.
- HANDLE WITH CARE TO PREVENT ACID SPILLAGE**
- LONG SHELF LIFE**  
No need to be recharged while stocked (if not activated).
- INTERNAL GAS EMISSION THROUGH VENTING HOLE**
- WIDE VARIETY OF 6V & 12V MODELS**

### MOUNTING ANGLE



### UPGRADE FOR

SLA MAX	SLA	MF	DRY
-	-	-	-