

B49-6

BS CODE: 300918

VOLTAGE **6V**

CCA **80A**

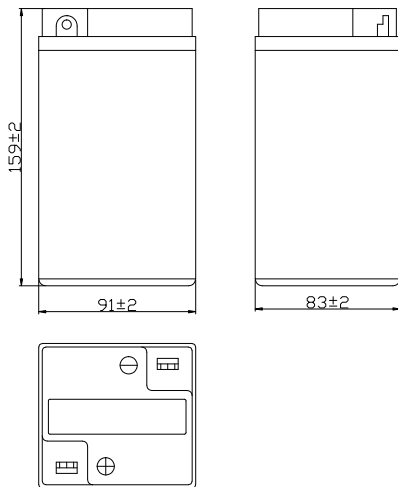
CAPACITY 20HR **10.5Ah**

CAPACITY 10HR **10.0Ah**



DIMENSIONS

LENGTH	91 ±2mm	3.58 ±0.08inch
WIDTH	83 ±2mm	3.27 ±0.08inch
TOTAL HEIGHT	160 ±2mm	6.3 ±0.08inch
WEIGHT	1.41 kg ±5%	3.11 lbs ±5%

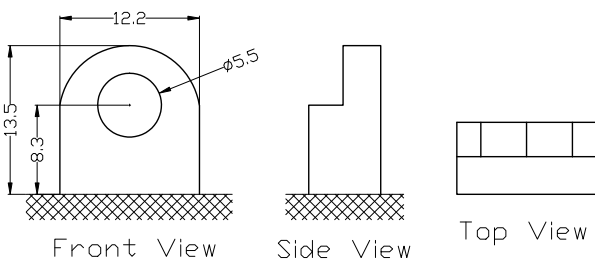


SLA FEATURES

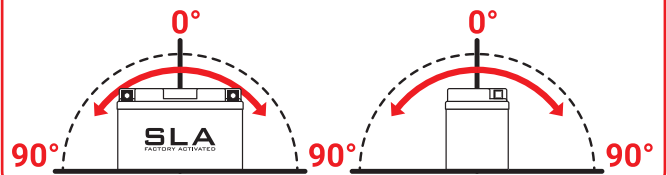
- FACTORY ACTIVATED**
AGM (Absorbent Glass Mat) technology.
- READY TO USE**
Just plug & play.
- NO MAINTENANCE**
VRLA (Valve Regulated Lead Acid) design.
- SPILL-PROOF DESIGN**
Factory sealed & electrolyte held in a glass fiber mat.
- NO ACID HANDLING**
Very safe.
- HIGH STARTING POWER & EXTENDED CYCLE LIFE**

TERMINAL (mm)

POLARITY



MOUNTING ANGLE



UPGRADE FOR

SLA MAX	SLA	MF	DRY
-	-	-	B49-6