

BB16AL-A2

BS CODE: **300839**

VOLTAGE **12V**

CCA **210A**

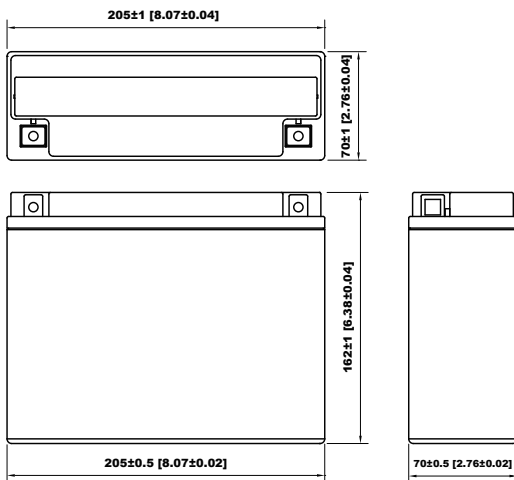
CAPACITY 20HR **16.8Ah**

CAPACITY 10HR **16.0Ah**



DIMENSIONS

LENGTH	205 ±2mm	8.07 ±0.08inch
WIDTH	70 ±2mm	2.76 ±0.08inch
TOTAL HEIGHT	162 ±2mm	6.38 ±0.08inch
WEIGHT	5.7 kg ±5%	12.57 lbs ±5%

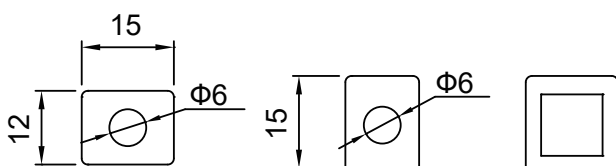


SLA FEATURES

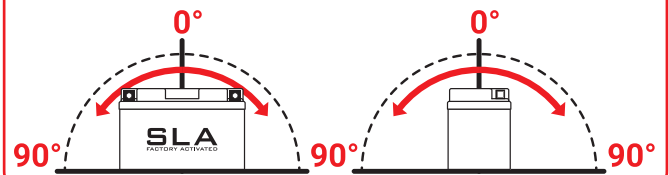
- FACTORY ACTIVATED**
AGM (Absorbent Glass Mat) technology.
- READY TO USE**
Just plug & play.
- NO MAINTENANCE**
VRLA (Valve Regulated Lead Acid) design.
- SPILL-PROOF DESIGN**
Factory sealed & electrolyte held in a glass fiber mat.
- NO ACID HANDLING**
Very safe.
- HIGH STARTING POWER & EXTENDED CYCLE LIFE**

TERMINAL (mm)

POLARITY



MOUNTING ANGLE



UPGRADE FOR

SLA MAX	SLA	MF	DRY
-	-	-	BB16AL-A2