

SLA12-18

BS CODE: **300633**

VOLTAGE **12V**

CCA **150A**

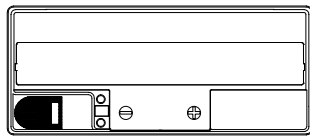
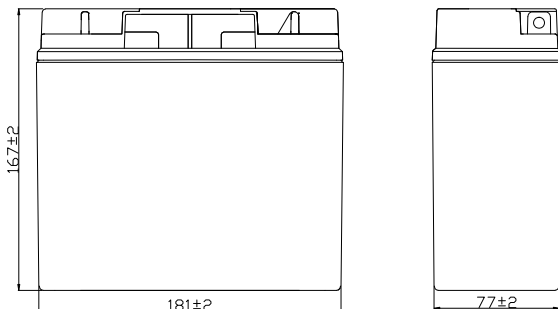
CAPACITY 20HR **18.9Ah**

CAPACITY 10HR **18.0Ah**



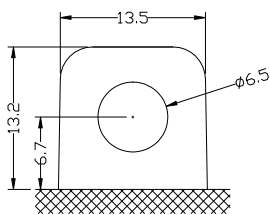
DIMENSIONS

LENGTH	181 ±2mm	7.13 ±0.08inch
WIDTH	77 ±2mm	3.03 ±0.08inch
TOTAL HEIGHT	167 ±2mm	6.57 ±0.08inch
WEIGHT	5.3 kg ±5%	11.68 lbs ±5%

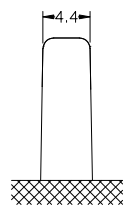


TERMINAL (mm)

POLARITY



Front View



Side View

SLA FEATURES



FACTORY ACTIVATED

AGM (Absorbent Glass Mat) technology.



READY TO USE

Just plug & play.



NO MAINTENANCE

VRLA (Valve Regulated Lead Acid) design.



SPILL-PROOF DESIGN

Factory sealed & electrolyte held in a glass fiber mat.



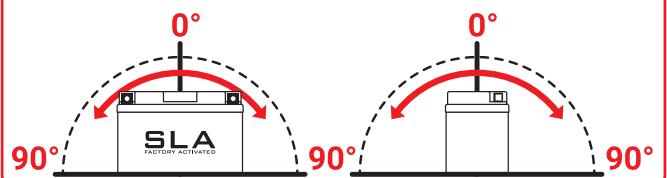
NO ACID HANDLING

Very safe.



HIGH STARTING POWER & EXTENDED CYCLE LIFE

MOUNTING ANGLE



UPGRADE FOR

SLA MAX	SLA	MF	DRY
-	-	-	-